

Ulster County, New York Open Space Plan

4. Landforms and Natural Features

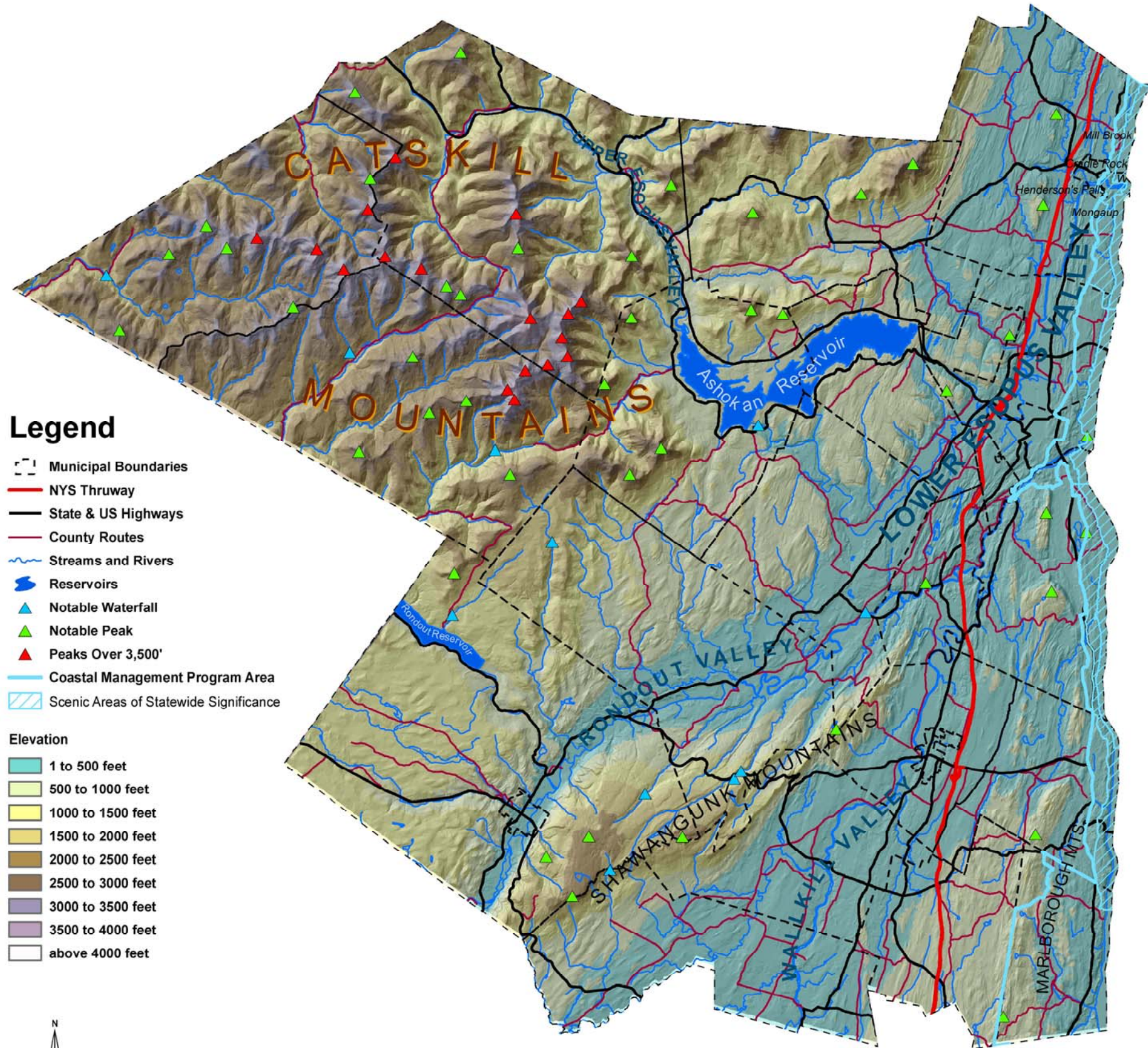
This map displays the locations of significant peaks and prominences, notable waterfalls, and reservoirs. It also displays large physical regions such as the Catskill Mountains, Shawangunk Mountains, and larger river valleys. In the background, a shaded-relief of elevations throughout Ulster County further illustrates where river and stream valleys occur as well as the location of hills and mountains.

Landforms and Natural Features Data Explained

The shaded-relief background image was created by modeling differences in elevation using a digital elevation model (DEM). A color range was applied to this image to show the range in elevation in Ulster County – from sea-level (blue) to the area around Slide Mountain, which at 4,180' is the highest location in the County. Other data displayed on the map includes peaks above 3,500', and other peaks of significance. An effort was also made to note the location of some of the County's waterfalls.

Data Sources

Landforms and Natural Features Data	Where Acquired	Description of Data
Waterfalls (points)	Digitized by Ulster County EMC (5/05)	Waterfall locations were located based on those noted on USGS topographic maps as well as from
Elevation (raster)	Model based on New York State 10 m digital elevation models (DEM) downloaded from Cornell University CUGR website.	A hillshaded relief model of continuous elevation for Ulster County.
Notable Peaks (points)	Digitized by Ulster County EMC (5/05)	Notable peaks were located on digital USGS topographic maps. An original listing of notable peaks was provided by the Ulster County Planning Board.
Hydrography (line)	Created by UCEMC (1997)	Streams of Ulster County modeled from USGS digital elevation models (DEM).
Reservoirs (polygon)	Obtained from New York City DEP, Division of Water	Surface waters of New York State as taken from USGS "blue line separation" from 1:24,000 scale topographic map series.
Coastal Management Program Area (line)	Obtained from New York State Department of State (2003)	Inland extent of the coastal Management Program.
Scenic Areas of Statewide Significance (polygon)	Obtained from New York State Department of State (1995)	Scenic area designations in the Hudson River Valley region of the state.



Legend

- Municipal Boundaries
- NYS Thruway
- State & US Highways
- County Routes
- Streams and Rivers
- Reservoirs
- Notable Waterfall
- Notable Peak
- Peaks Over 3,500'
- Coastal Management Program Area
- Scenic Areas of Statewide Significance

Elevation

- 1 to 500 feet
- 500 to 1000 feet
- 1000 to 1500 feet
- 1500 to 2000 feet
- 2000 to 2500 feet
- 2500 to 3000 feet
- 3000 to 3500 feet
- 3500 to 4000 feet
- above 4000 feet



Ulster County Planning Board
244 Fair Street
PO Box 1800
Kingston, NY 12401
845-340-3340

Datum and Projection: NAD 27, UTM 18
Map Date: June 2009



0 5 10 Miles

This map is for informational purposes and was not prepared for legal, engineering, or surveying purposes. Users of this information should consult the primary data and information sources to ascertain the usability of the information.